

THE LYDSTON AND CHATHAM 1971-S **PROTOTYPE IKES**

THE IKE GROUP

Rob Ezerman, lead author and photographer, with
David Golan, Brian Vaile, Gary Hoop, Andy Oskam, Herbert Hicks and Bill Sanders
Special Contributors Lee Lydston and Charles Chatham

SECTION 1, THE LYDSTON PROTOTYPE

LEE LYDSTON FINDS AN UNUSUAL 1971-S IKE	2
THE IKE GROUP'S REPORT S A 1971-S PROTOTYPE	3
OBSERVATIONS	3
THE OBVERSE	5
THE REVERSE	6
DETAILS COMPARED WITH 71-S PRODUCTION PROOF	7
1970 GALVANO EARTH	11
1970 OBVERSE GALVANO	14
PAIRED REVERSE GALVANO	15
DOUBLING IN PROTOTYPE'S MOTTO	15
HISTORIC PERSPECTIVE AND DISCUSSION	20
BRIEF SUMMARY AND NOTES	22
PHOTOS OF PROTOTYPE'S ANACS HOLDER	26

SECTION 2, THE CHATHAM PROTOTYPE

INTRODUCTION, AND DISCUSSION	28
PHOTOS WITH COMMENTS	30
LEE LYDSTON'S ACCOUNT OF HIS ROLE, AND ROBS COMMENT	39
PHOTOS OF HOLDER, OBVERSE AND REVERSE	41

SECTION 1

THE LYDSTON 1971-S PROTOTYPE STRIKE

ODV-10, RDV-007, DDO-023

Introduction

Section 1 was first published on the Ike Group's web site (www.IkeGroup.org) in 2008 and condensed as the cover story of CONECA's ErrorScope Vol 17, May/June 2008, pp 6-7.

We're reproduced the article (following) with only modest changes because it has historic significance for Ike nuts, as well as a reference and comparison for Section II, our preliminary report on the Chatham 1971-S Prototype.

Most great individual coins have an interesting story and the Lydston Prototype is no exception. Lee and his wife were attending a major West Coast coin show when Lee's wife called Lee over to a table that seemed to have some tubes of Ikes. Lee asked to look at them and about half-way into a tube of mixed Ikes he noticed an Ike that seemed different somehow. Intrigued, without further reflection, since it was a big show and many tables yet to survey, Lee bought the tube and tried to stay calm and "collected" for the rest of the show.

When home, he pulled the unusual Ike from the tube and studied it closely. It was indeed different, especially the letters on the obverse, along with the Earth and craters on the reverse.

Knowing now this could be either an important Ike or a fake of some sort, Lee contacted the lead author for the Ike Group, Rob Ezerman, and sent him the coin. Lee waited patiently for several months while Rob studied the coin, sought outside opinions, and helped publicize the Ike by challenging other Ike collectors to check their collections and to search for other examples. A two page flyer was printed and distributed to dealers with Ikes at coin shows, to more than a few coin shops, and of course to any interested individuals. No additional examples were brought forward

Meanwhile, Dr. Wiles attributed both the obverse and the reverse as new design varieties, with the obverse as a new DDO. Thomas DeLorey was consulted whether "Prototype" was an appropriate designation. When he concurred, off went the Ike to ANACS for holding. John Roberts chose "PROTOTYPE STRIKE" for the holder's tag which in retrospect was on the money.

For historic accuracy, and to convey Lee's excitement as he realized he might have come across an important Ike, here is Lee's first person account of his purchase:

"I walked up to a table at the Long Beach Show and asked if the gentleman had any Ikes I could look at. He pulled out a box of about 12-14 rolls in assorted types of storage media, some in square tubes, some in round tubes and one roll in a torn and beat up paper wrapper."

"Midway through examining one tube's contents, a mix of 40% silver, both Business Strike and Proof, and clad Ikes, I found a '71-S BS that was about the cleanest BS I had ever seen but did not take a closer look until I got home.

"Once home, I realized it looked more like a proof than a BS Silver, yet it did not have cameo contrast. Still, it took my breath away. But was it a copy, a hoax? Why was it so darn different from other 1971 Ikes? My head spinning, I contacted the Ike Group and arranged to send this strange Ike to them for photography and their evaluation. Then I blacked out..."

REPORT OF A PROTOTYPE IKE PROOF THE IKE GROUP¹

LEAD AUTHOR ROB EZERMAN, Herb Hicks, Brian Vaile, Ehab Eassa,
David Golan, Gary Hoop, Andy Oskam and Bill Sanders, with contributor
Lee Lydston

Found in a tube of mixed Ikes at a major West Coast Coin Show, this remarkable silver prototype Eisenhower was sent to the Ike Group for our evaluation by Ike aficionado and co-author for this project, Lee Lydston.

This report is a summary of our observations and some speculation based on our research into the 1971 Ikes including the 1971-D Friendly Eagle Variety².

The Ike Group nominates this interesting Ike for prototype status and for pattern consideration: the authors will refer to it as "prototype" in this report.

Observations

- The prototype is 24.3 gm and 1.50 inches in diameter.
- Its **reeding** is identical to that on low relief 1971-S silver business strike Ikes ("Blue Ike").
- It appears to be struck in **high relief** on both sides.
- The **fields** are semi-prooflike, the rims are perfect and square, and the central devices and Earth have variable and crude cameo. There are fine die-polish lines on both sides.
- The **obverse** letters and numbers are somewhat different than all such on the high relief 1971-S Ike (silver) production proof and likewise somewhat different than all such on the 1970 obverse Galvano³.
- In the main, the prototype's obverse letters and numbers have lighter serifs.

- The left leg of LIBERTY’s “R” is almost a “**Peg Leg**”, associated with coarse die abrasions that run from under the foot of the left leg to Ike’s hairline.
- Ike’s **hair**, especially the front half, is different than on any other Ike obverse design. His ear is very slightly different.
- The **reverse** letters and numbers are essentially identical to all such on the ’71-S Proof and the 1970 Galvano.
- The prototype’s **Earth** has heavy crude cameo which almost obscures three barely visible in-relief islands that contrast with the incuse “mega island” of the 1971-S high relief proof. The prototype’s Earth seems very similar to the 1970 Reverse Galvano Earth and could be identical.
- The **lunar craters** on the prototype have the same general configuration as those on the Proof and Galvano but lack many of the details of the Galvano’s craters and lack art-work details seen on the 1971-S proof craters.

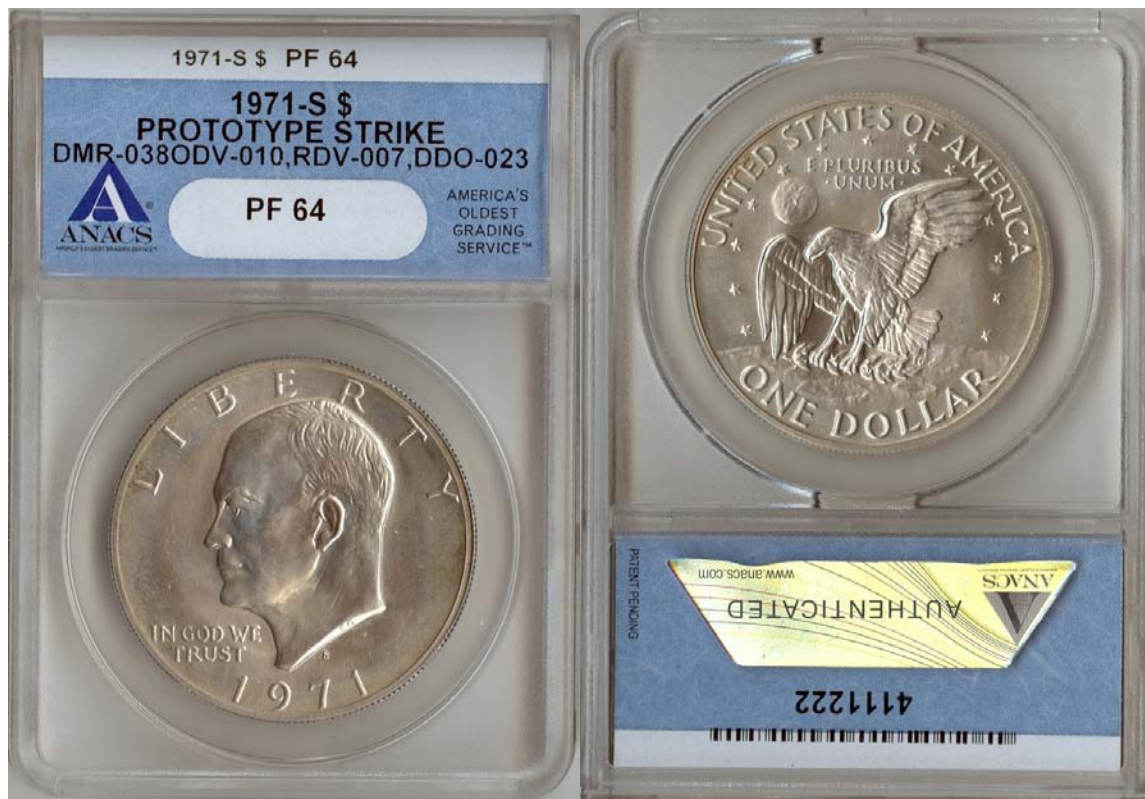


FIGURE 1: The Ike Group is happy to report that this Ike was holdered by ANACS!

The Lydston Prototype photographs ALL RIGHTS RESERVED



FIGURE 2, Prototype Obverse Note the fine die abrading/polishing lines in all fields and the heavier “abrading” around the top of the bust and in particular between the R and Ike’s hairline, creating an “Almost Peg Leg” (tiny serifs persist). The letters of LIBERTY are not as heavily serified and the letters of IN GOD WE TRUST are more elegant, as are the numbers. Ike’s hair is also different from both the 1970 Galvano and the 1971-S Proof and different from the Low Relief hair as well.



FIGURE 3, Prototype Reverse With the exception of the Earth and crater details, the prototype reverse seems basically identical to the reverse of the 1970 Galvano and the 1971-S production Proof. Die abrasion or polish lines in the fields are again evident, possibly evidence that this design was being explored for both proof and specimen production, the fine abrasions giving this Ike the appearance of both proof and business strike: in other words, a kind of “stem cell” Ike.

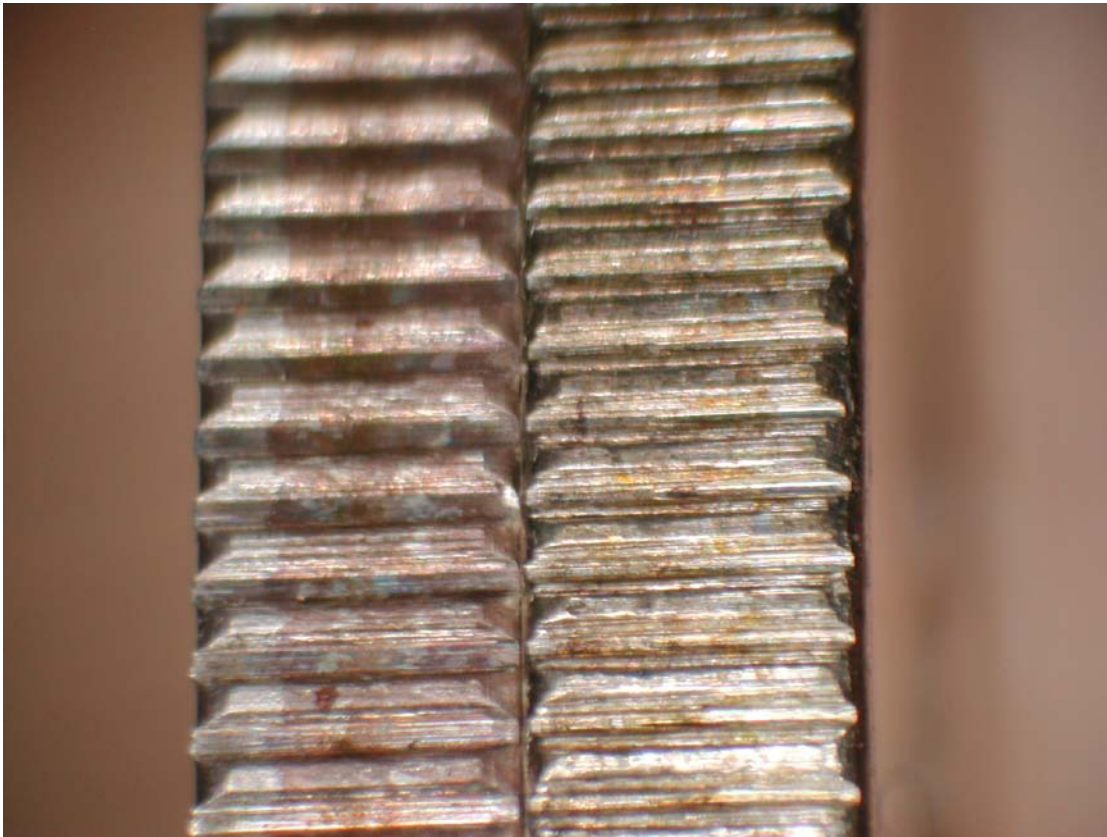


FIGURE 4 Left, Prototype reeding Right, common 1971 S production proof reeding

The outer surfaces of the prototype “cogs” are almost flat, with a central score. The 1971-S production Proof cogs have the same central score but are more rounded, almost pointed. Though not photographed here, the prototype’s reeding is identical to that on the 1971-S BS Silver Ike, another instance of Lee’s Ike having features consistent with both eventual proof and business strike Ikes.

We do not know if the greater visibility of the copper core on the prototype’s edge has any significance. The prototype’s weight is at the low end of tolerance for silver clad Ikes.

Highlights of a few differences between Lee Lydston’s prototype and the 1971-S proof obverse



FIGURE 5 Prototype on left

1971-S Design Peg Leg proof on right.

The prototype’s “R” of “LIBERTY” is almost a “Peg Leg”, while the 1970 Galvano’s “R” has modest serifs (Figure 12) and the original 1971-S Proof is a Design “Straight” Peg Leg⁵. The coarse die abrasions under the left leg of the prototype’s “R” (black arrows) are fascinating because there is no die clash to repair so it appears the abrading was undertaken purposefully to reduce the size of the Galvano’s serifs, suggesting this prototype was an early exploration into Peg Leg design.

In other words, the left leg of this R is mid-way between the serif-R of the eventual low relief R and the initial high relief (proof) peg leg R, consistent with this Ike being a “Stem Cell” or exploratory “Prototype” design.

Note the absence of a serif at the bottom of the stem of the “G” and the unique, cute artwork at the top of the vertical of the “R” (white arrows).

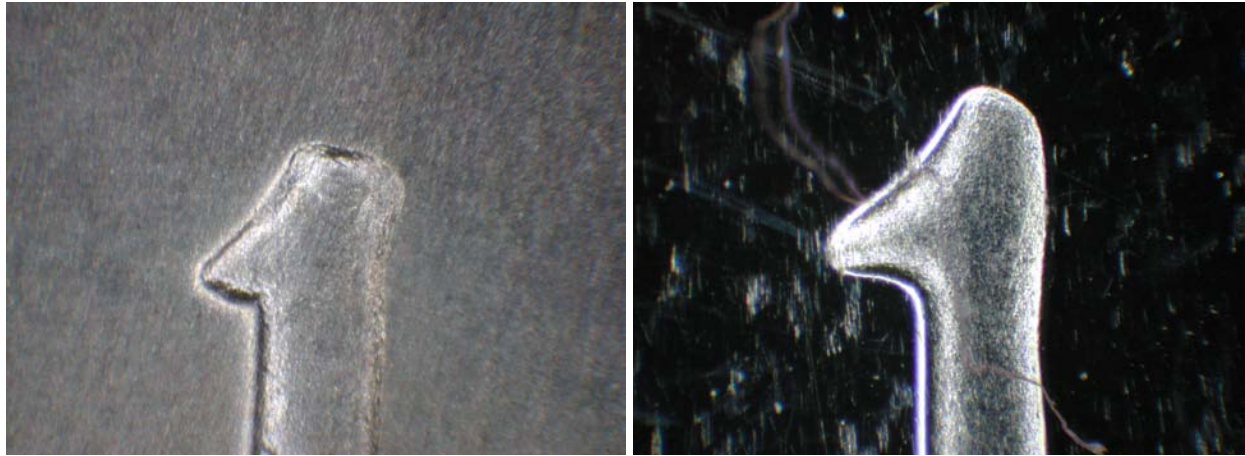


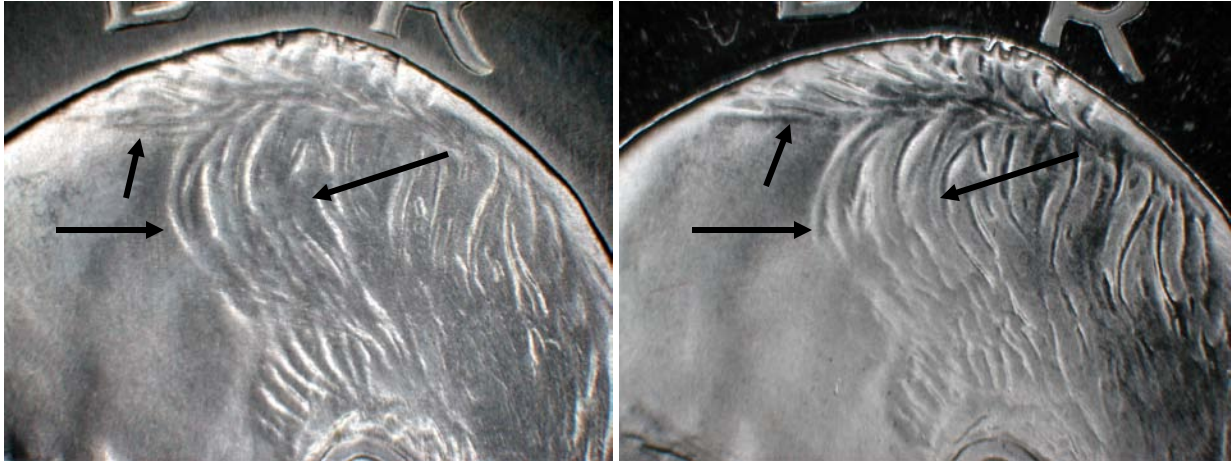
FIGURE 6 Prototype on left

1971-S Peg Leg proof on right

The first "1" of the date has a simpler and less refined appearance compared to the common proof.



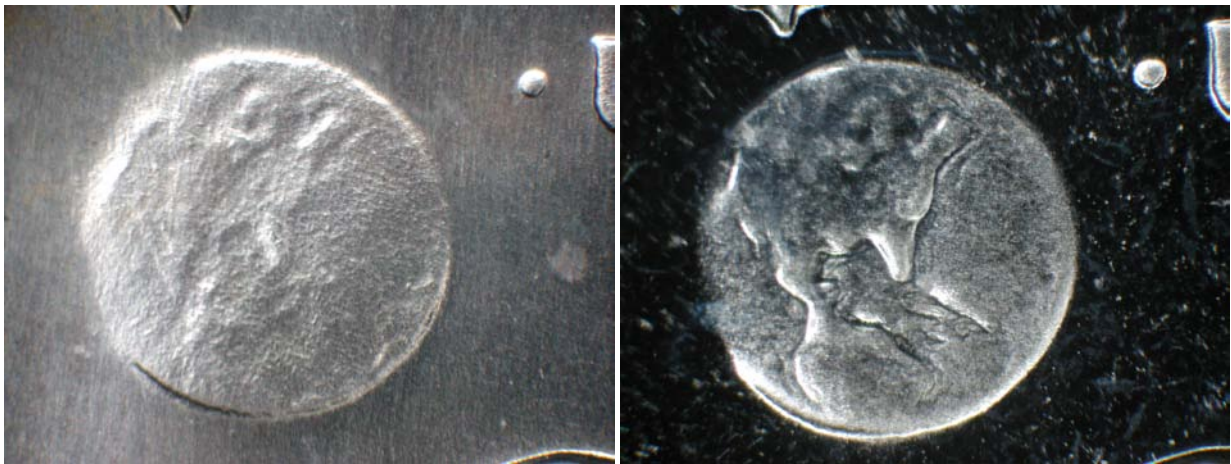
FIGURE 7 Prototype ear (left photo) has a broader and longer "valley" between the upper middle central thickening and the thickening just below (arrows pointing slightly up). The Prototype has a hair "strand" at the arrow pointing slightly down: on the common proof that hair strand runs further south, touching the ear.

**FIGURE 8** Prototype on left

1971-S Peg Leg proof on right.

Hair details are difficult to sort out, but with patience, and even making your own sketches of the details in each “region” of hair, you will eventually see that the Prototype’s hair design has unique features. The Ike Group’s resident tool and die expert tells us that it would be a matter of a few minutes with a die-grinder tool in the hands of a master engraver like Gasparro, using die and/or hub or both in sequence to substantially modify Ike’s hair details. (Pull out a 71-S Specimen Ike and note the sharper, more vertical borders of many of the important hair strands, we think to bring out these hair details in the low relief design – under loupe or microscope, some of the sharper vertical hair “strand” delineations look exactly like quick hand-engraved tool work.)

Highlights of a few differences between Lee Lydston’s prototype and the 1971-S proof reverse

**FIGURE 9** Prototype on left

1971-S Peg Leg Proof on right

The Prototype’s Earth has crude “cameo”, a proof-like feature. The Earth itself appears to be in higher relief than on the production proof yet its details are in lower relief except for the most northern features and the west coast of Africa. The Prototype’s “Islands” (what one can see of them, and this photo was taken with sharply angled lighting and contrast boosted to emphasize the

Earth's details) are barely visible but unique in the Series. The overall design of the Prototype's Earth, however, is otherwise quite similar to the proof's Earth.



FIGURE 10 Earth as it appears on the 1970 galvano. Florida points almost toward the tip of the Eagle's beak on the Lydston Prototype, this Galvano, and the common proof (also on the FEV). The Lydston Prototype and Galvano, however, show Africa more strongly than on any production Ike. Photographed from an angle.

The islands on Lee's Prototype are not identical to the islands on this Galvano but are similar as best one can tell. The islands on the proof, of course are radically different, an incuse sketched "mega-island".

Interesting Note: the Galvano photographed in this article was unearthed from an un-marked cardboard box stored with other such boxes in the storage barn at the Eisenhower Museum and thus we have yet another interesting story. The lead author had read in several 1971 coin magazines that the Mint, with much fanfare and the participation of then Director Mary Brooks, had presented to Mamie Eisenhower obverse and reverse Galvanos dated 1970. Rob contacted the Eisenhower Museum and the custodian of artifacts found a catalog notation of having received the Galvanos but they were not hung anywhere in the Museum and there was no record if or where they might have been stored.

On the phone with the Director of the Museum, Rob pressed the matter, and the Director suddenly said "Wait, I have a thought: we have some unorganized over-flow storage out in the barn, stay on the phone and I'll go out and root around." About five minutes later, an unmarked cardboard box was opened and there were the Galvanos! With the services of the Museum's official photographer, the Galvano's were photographed on behalf of Rob and the Ike Group. (Full 1970 Galvano photos in next section) This set of Galvanos is one of four the Mint created to distribute as part of their early publicity campaign to bring attention to this new dollar coin. It is unlikely any of these sets were used in production, even in

trial runs, as the Janvier Reduction Lathe leaves microscopic groves on the Galvano that would have been a chore to polish out.

It would be very interesting to photograph any of the other sets of publicity Galvanos, but our guess is they came from the same wax model and would be identical to the Gettysburg Galvanos. The obvious questions, "How many different Galvanos were created as part of early design work?", and "How many master hubs were cut by the Janvier Reduction Lathe from each Galvano whose design was being considered for production?" may never be answered (see Chapter 36 for an interesting update: design improvements were engraved into THE Galvanos as they occurred so the Galvano became a running repository of all the design changes and many sequential "Reductions" were run off in the design phase).

So where in the time-line of the development of obverse and reverse Ike designs does the Gettysburg set of Galvanos fall? Our best guess is late 1969 or early 1970, possibly before Gasparro realized he would have to have a separate design for the low relief reverse.

And where in the time-line was Lee's Prototype created? Maybe not such a wild guess to think it may have been created when Gasparro was still thinking one design would work for all the 1970 Ikes (yes, early on, the Mint anticipated production beginning in 1970). At least one coin magazine article quoted Gasparro in the early Spring of 1970 saying he realized now that the CuNi-clad circulation Ikes would have to be struck in low relief, the intended high relief dies did not stand up to the new hard, large clad planchets in test runs. That quote could place the Lydston Prototype in the first half of 1970.

Back to the photos

The walls of all but the far right crater on the 1971-S Peg Leg Proof are detailed with many separate finely-inscribed, in-relief lines that would have required modification of the master die. Also, all four craters have a few additional incuse lines not present on the prototype.

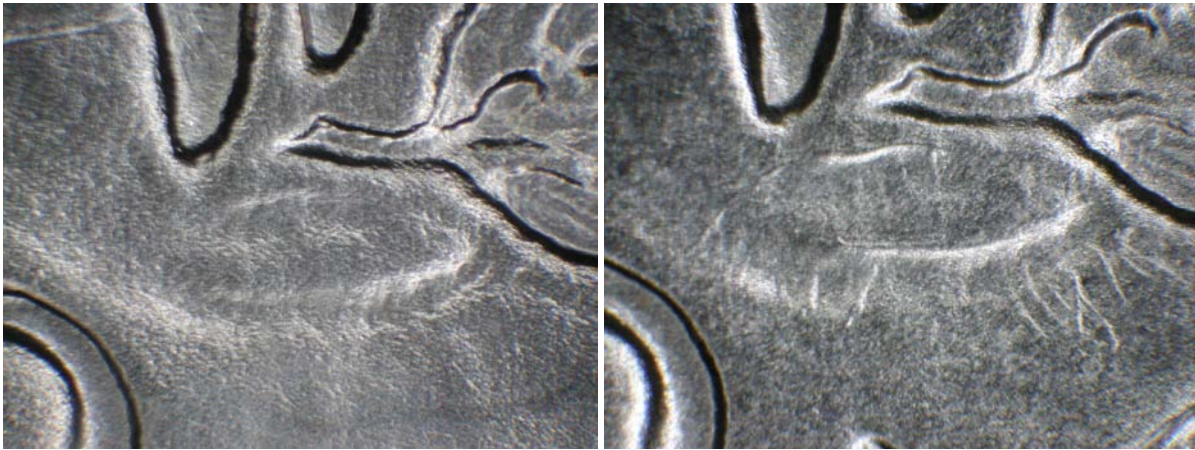


FIGURE 11 Prototype on left

1971-S Peg Leg Proof on right

In the above photo and in the crater photos that follow below, we are moving from reader's right to reader's left across the moon, skipping the small far left crater.

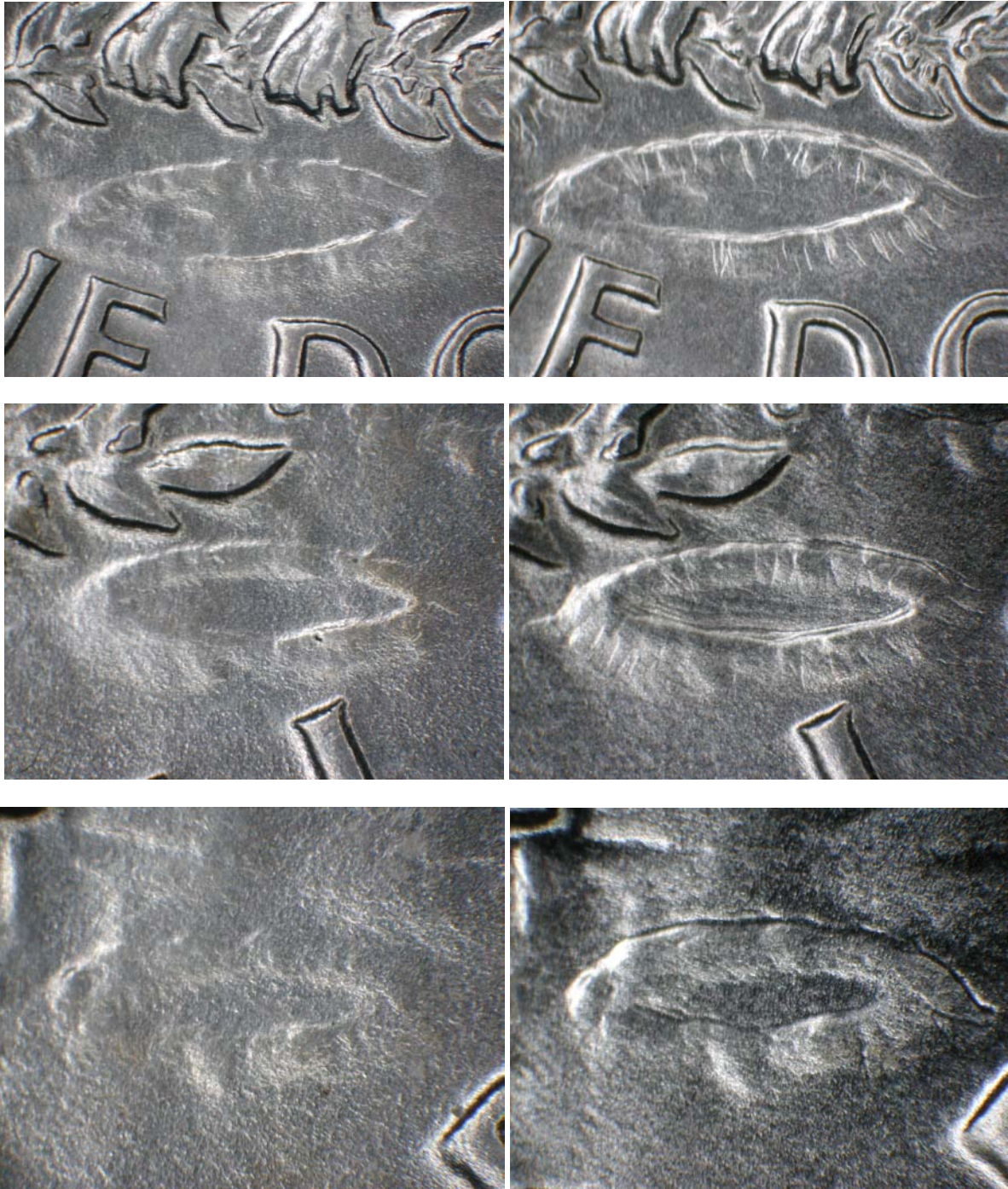


FIGURE 11 (continuation): Prototype on left 1971-S Peg Leg Proof on right

Note the presence of heavy incuse lines outlining the rear of the crater walls on all but the upper left crater on the '71-S production Proof. These incuse lines appear to be hand-engraved artwork present on the high relief Master Hub as more than one Working Hub would have been required to mint over three million proofs (2500 Proofs per die, we think 10 to maybe 100 at most dies per working hub.)



FIGURE 12 Eisenhower Museum's 1970 galvano obverse.
COPYRIGHT ROB EZERMAN AND THE IKE GROUP

On this page and the next, the Ike Group is proud to present the Eisenhower Museum's copy of the Mint's 1970 publicity Galvano. Took some digging to get these photos and we had to hire a photographer.



FIGURE 13 Eisenhower Museum's 1970 galvano reverse.
COPYRIGHT ROB EZERMAN AND THE IKIE GROUP

The Lydston Prototype Strike hub-doubled obverse

The photos in Figures 14 - 21 show some of the doubling in the MOTTO and a couple of other areas on the obverse of Lee's Prototype. Doubling, even doubling as strong as on this obverse, will not show well with the direct lighting used to compare the Prototype and production proof.

The following photos, therefore, used angled lighting aggressively to bring out the doubling. These are among my earliest doubled die photos so framing and focus leave a lot to be desired, I was learning and experimenting, but, WOW! What an Ike. Enjoy! If you're new to Ike doubled dies, you might even get hooked. There aren't a lot of doubled die Ikes this dramatic, but examples can be found in the Series, so start searching!



FIGURE 14 Doubling on "IN" of the motto.



FIGURE 15 Doubling on "IN" of the motto, different lighting direction.



FIGURE 16 Doubling on the "E" of WE



FIGURE 17 Doubling on the first "1" of 1971



FIGURE 18 Doubling on the "TR" of TRUST.



FIGURE 19 Doubling on the "TR" of TRUST, different lighting

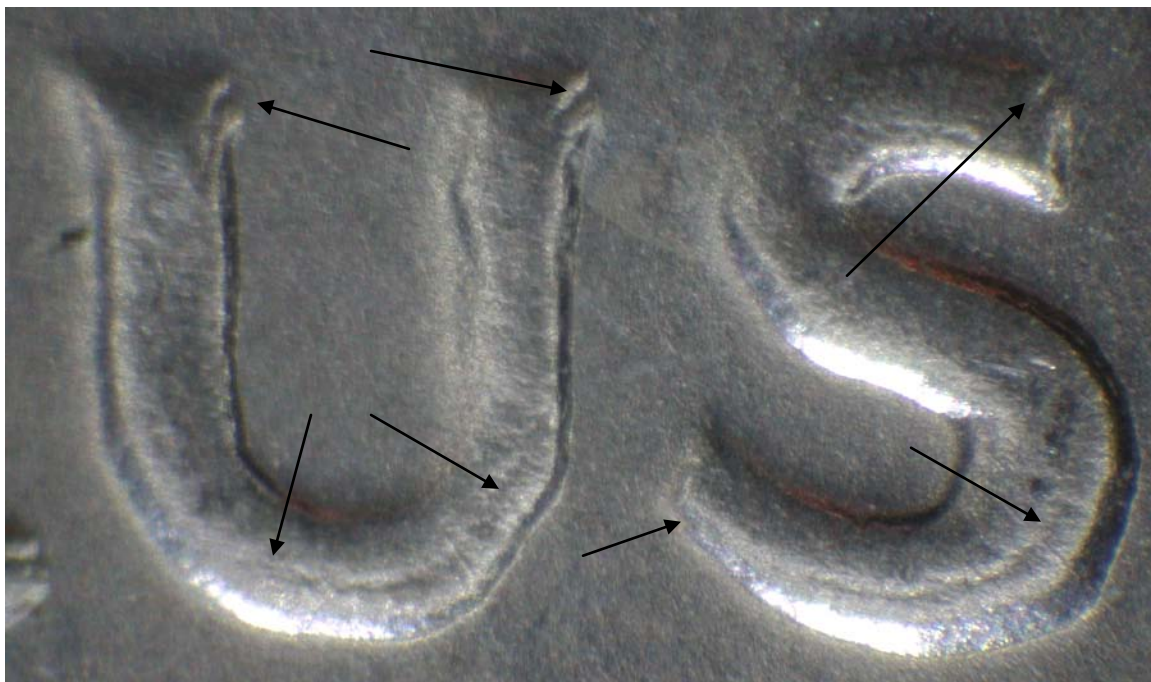


FIGURE 20 Doubling on the "US" of TRUST.



FIGURE 21 Doubling on Frank Gasparro’s initials on the reverse. This photo shows a nice highline on the “G” (black arrow), much the same flag pole (or is it a flag pole - stay tuned for our next Ike book, early 2012) as on the galvano, and some of the same Janvier cutting head remnants as are found copiously on the Chatham Prototype Reverse.

Historic perspective and speculation

Background

It seems reasonable that the 1970 Galvano pictured was the original high relief design or close to it. We know from coin magazine photographs⁶ that there was at least one obverse Galvano dated 1971/0 that seems to depict an older Ike with larger jowls and paradoxically more robust hair, go figure, but the differences are not great and it’s reasonable Gasparro would have experimented with several obverse designs in the early phases of creating the Eisenhower Dollar.

The absence of a “furrowed brow line” on the (1970) reverse Galvano’s Eagle is consistent with Gasparro’s approved preliminary “friendly Eagle” design sketches⁷ and a marker of the original reverse designs. It is worth noting that the 1971-S Ike production proof is quite similar in design to the obverse and reverse Galvanos other than some hair features, the Earth, and crater details. The prototype, therefore, stands out as a possible exploration into different obverse minor devices and hair, differences that were not picked up in the design of the 1971-S production proof with the possible exception of the peg leg R.

It is known that Gasparro originally intended high relief design(s) for all three 1971 Ikes: the BS Silver, the Proof Silver and the Circulation Ikes. Early in the design process, no later than the spring of 1970 and possibly earlier, Gasparro realized the hard CuNi-clad circulation planchets would have to be struck in low relief.

The eventual low relief reverse design increased emphasis of many details such as the Eagle feather separation, and the Caribbean Islands. In addition, there was substantial hand-engraved "**crude artwork**" added to the reverse design:

- The furrowed brow line present on the final low relief reverse design is a crudely engraved **incuse** feature likely carried out on an obverse Master Hub rather than on each working hub..
- The incuse furrowed brow is accompanied by many **in-relief** hand-engraved lines that help separate the Eagle's left wing feathers (viewer's right) and which give greater relief and "flair" to the body feathers. In-relief details are created on a die, the master die in this case.
- The Eagle's left wing also has innumerable scratchy hand-engraved incuse artwork that gives texture to the feathers (Figure 9).
- In addition, there are heavy in-relief and maybe incuse added-artwork lines that help separate the tail feathers.

Both the in-relief and incuse sets of changes were probably added to compensate for the loss of visual impact from the lowered relief, a reasonable explanation. ***But has there ever been a major new circulating coin series introduced with so much last-minute rushed-looking crude artwork?***

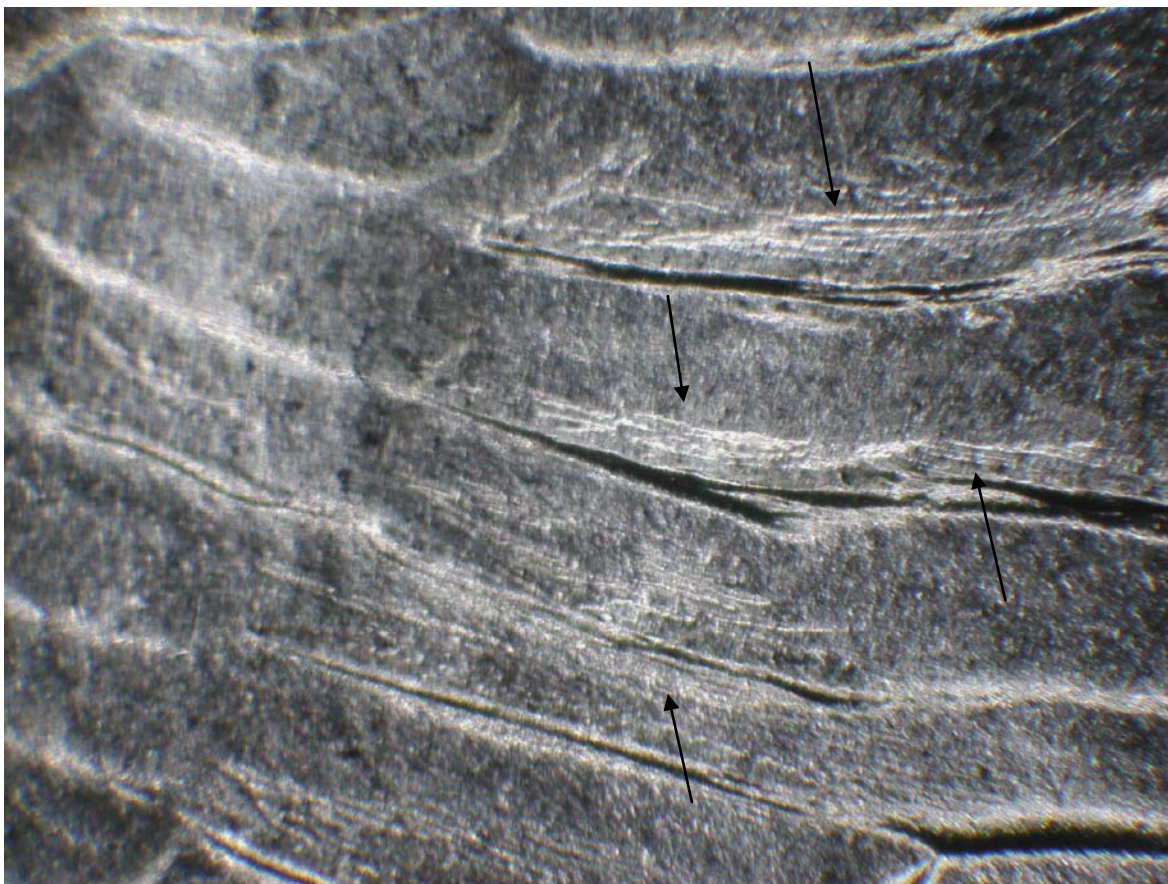


FIGURE 22 1971-S prototype Ike with hastily added artwork to left wing.

Why the Rush?

As early as the summer of 1970, “Mint Authorities” reported there were already two sets of Master Dies, one for high relief and one for low relief, so we know Gasparro was already then addressing the problem of the clad planchets tearing up the existing die steel.

Gasparro was also quoted concurrently that he had a low relief master die by the summer of 1970 (at whatever stage of design), and knowing that minting low relief Ikes did not begin until July 1971, we have to ask why the low relief reverse design used for all 1971 circulation and the BS Silver Ikes had so much crude and hasty-appearing hand-engraved art work? *Why the rush?*

The Ike Group offers the following speculative explanation, beginning with the possibility that Gasparro’s initial low relief reverse design may have been the FEV reverse, and that the FEV reverse was intended for all three 1971 low relief Ikes, the Business Strike (“Specimen”) Silver Clad Ikes, the circulation clad Ikes, and, *and* CuNi-clad proof Ikes.

For some reason the clad proof project was eventually abandoned, but not until the S-Mint, we believe, had acquired and was burnishing several million clad planchets for proof production, proof planchets that wound up in Denver’s 1971-D Ike production and identifiable in about 5% to 10% of 1971-D Ikes (Chapter 21).

By the time the clad proof production plan was eventually dropped, if we’re correct about the FEV design primacy, Gasparro would have had little time to decide whether or not to stay with the FEV reverse design on ’71 BS Silver and circulation Ikes. Since the FEV reverse design is highly detailed (appropriate for a proof design but possibly seen as increasingly problematic in high-volume circulation Ike production as the difficulties with clashed dies and die sink became more obvious), we suspect Gasparro chose instead to simplify the FEV design and at the same time give this new design stronger details (like the added brow line and greater emphasis of Eagle tail, wing and body feathers) that would look sharper in low relief and stand up better in later die states, and, which gave him the opportunity to return to his original not-friendly Eagle (Chapter 23).

Time was probably too short to create a new Galvano, the added expense might have been a consideration and a new Galvano was not necessary as the new reverse design was probably created by modifying an existing reverse Master Hub (erasing the Earth and hand engraving an incuse brow line and incuse feather details) and then modifying its hubbed Master Die (re-engraving a new Earth, enlarging the stars and adding substantial in-relief feather details).

The authors were not aware until very recently that the die shop at the Philadelphia Mint was “promoting” working dies and working hubs to master dies and master hubs, and hubbing dies and hubs equally in both directions, that is, creating master hubs and master dies from successful working dies. Promotion and bi-directional hubbing would have afforded unlimited opportunities for adjusting and changing designs and design features (Chapter 36)).

The reason we have taken this somewhat speculative detour into the low relief reverse design is to underscore the chaos with which Gasparro was dealing, chaos which might have cut off his efforts to explore the somewhat more elegant obverse and reverse design details we see in the Prototype.

Our speculative reconstruction may be incorrect in some or many details, but our assessment that most of 1970 through June 1971 and even into 1972 was chaotic for Gasparro is based on solid observations. That we don’t see the more elegant details of the prototype on subsequent Ikes (with the exception of the peg leg R) may simply be evidence that Gasparro became overwhelmed and had no choice but to retreat to his original 1970 obverse Galvano design for the high relief production proof while he scrambled to come up with a workable new low relief reverse design when the FEV failed production tests. In addition, it may be telling that the high and low relief obverse designs are so very similar in design and amount of relief: other than a few details (Ike’s hair) that would be easy and quick modifications in the hands of a skilled engraver.

Summary

This 1971-S Lydston Prototype Ike appears to have been worked up in proof format based on its proof-like fields, crude and variable cameo, square rims and exceptionally clean appearance. Both obverse and reverse fields, however, show wide-spread fine die polishing as if both sides were a work in progress or which may have served to give this Ike somewhat the appearance of a Silver Specimen Ike. Also, the Prototype's reeding is now found on Silver Specimen Ikes, all of which suggesting this Prototype may have served as a kind of "Stem Cell" Ike that conveyed features and the appearance of both proof and specimen Ike.

The obverse letters and numbers are largely unique, Ike's hair is unique toward the forehead and his ear is somewhat different but overall the prototype obverse is closer in appearance to the 1970 obverse Galvano than to the 1971-S production proof obverse, also suggesting this prototype was created early in the Eisenhower Dollar design sequence.

The die abrading under the left foot of the "R" of "LIBERTY", associated with miniscule serif remnants, suggests the prototype was an early exploration into the "Peg Leg" design which we now believe was the initial 1971-S production proof design (it was certainly the first shipped).

The prototype's reverse is very similar to both the (1970) reverse Galvano and the 1971-S production proof reverse, with the exception of the Earth and lunar craters. The prototype's Earth is nearly identical to the Galvano's Earth, with low-relief islands that contrast to the incuse mega-island on the production proof reverse. Crater details differ among all three, with the Galvano showing more crater wall details than either prototype or production proof and the production proof showing more design details than the prototype.

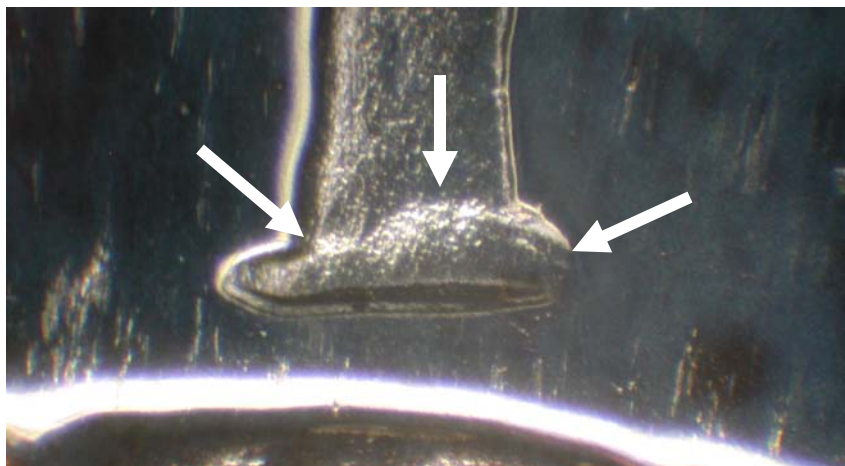
The prototype's reeding has the same design as the low relief 1971-S BS Silver production Ike.

The authors speculate that this prototype may have been crafted in early 1970 at a time when Gasparro intended all 1971 Ikes be struck in high relief.

Notes

1. The Ike Group is seven Ike nuts who have combined resources and talents for a single-minded pursuit of learning more about this short series.
2. The Ike Group published an article devoted to the Friendly Eagle Variety in the July 2007 Issue of *Numismatist*. Included is our evidence that the FEV design was originally intended for a low relief 1971-S CuNi-clad Proof. We also wrote extensively about Gasparro's initial late-1969 reverse design sketch showing a proud and somewhat fierce eagle with a heavy furrowed brow line, along the lines of the Peace Dollar Eagle's brow line. When Mary Brooks insisted that Gasparro's sketch eagle was too fierce, that brow line was dropped and the sketch drawing was then approved. We believe Gasparro must have been delighted to replace the brow line on the low relief 1971-2 Ike reverse.
3. The pair of 1970 Galvanos pictured in this article (Figures 12 and 13) resides at the Eisenhower Museum in Abilene, KS. These photos were taken by a local freelance photographer for the Ike Group and we retain publication rights. In 1971 the Mint donated three or four sets of 1970-dated Galvanos to various public institutions but the pair at the Eisenhower Museum was the only pair we could locate. The ANA Museum was given a pair in 1971 by a private donor but they could not be located by Museum personnel in 2006.
4. All photos in this report, other than the Galvano photos, were taken by lead author Rob Ezerman and rights are retained. Microscope equipment included an LED ring light.

5. The Ike Group published the story of the 1971-S “Silver Peg Leg Ikes” in the January 2008 issue of *“The Numismatist”*. Included was our strong evidence that the original 1971-S production proof design was the “Straight Peg Leg” design. The Peg Leg occurs again and again throughout the series in both BS and Proof Ikes, and both as an Obverse Design feature and as an accident of die abrasion/polish. Intrigue enters when one realizes that the low relief Business Strike CuNi-clad and silver-clad 1971 Ikes carry a uniquely massively serified “R” but then here come two 1971-S silver-clad Specimen Ikes with Design Peg Legs, minted, we think in March 1972(!). Then came the 1972 Design Peg Leg used on both Proof and Specimen Silver Ikes, and finally the Bicentennial Type 1 Design Peg Leg. But did you know that the original 1976 Type 2 Proofs were also a Peg Leg Design (“Eskimo Boot”) but quickly evolved to what looks like a serif-R upon proof re-treatment field polishing? *And all of this may have begun with the prototype in this report...*
6. A 1971 or 1972 numismatic magazine had a photo of a heavily worked 1971 obverse Galvano depicting a more heavily haired, older Ike: the Galvano was in a Janvier reducing machine and had an in-relief “1” over the ghost of a previous “0”. The somewhat disorganized author who studied this photograph has mislaid the magazine. If any reader has a copy on hand, the Ike Group would be most grateful. It is possible that Ike’s bizarre appearance in this memorable picture was a function of a Galvano’s massive relief and side lighting.
7. Gasparro’s original sketch drawings were published in a short, hard-cover 1971 monograph by The American Mint and Postal Society with the cooperation of the Philadelphia Mint (EISENHOWER, The Man, The Dollar and The Stamps, Thomas W. Becker). Reproductions of the sketches have appeared in several coin magazines since.
8. (Got lost in the shuffle.)
9. COIN WORLD, February 28, 1973. We are grateful for this detailed breakdown of 1971 and 1972 mintages including monthly Ike proof and BS Silver Ikes production, and to author Herb Hicks for having kept a copy all these years (see Ch 38 for the complete chart). There is much to learn from this report: for example, the 1971-S production proof was first minted in September of 1971, all of 2,180 that month, and then not again until December when 1,219,990 were minted, most probably all Peg Legs, followed by 2,806,244 in March 1972(!), most probably all with the “funny-foot” crude added serifs (Figure 10). (This has been confirmed thanks to dated Mint shipments of boxes of 5.)
10. Figure 23, “Funny Foot” SERIF-R, 1971-S proof – looks “added on” and probably was



11. 5% to 10% of 1971-D Ikes show remarkably proof-like surfaces on both sides, including the top surface of the rims and minor devices, independent of die state. There is also a remarkable absence

or near-absence of annealing chatter, the multitudinous minor defects (for which a loupe may or may not be needed) which are due to the violent banging experienced by the circulation planchets as they are slowly heated to red-hot and then slowly cooled off as they traverse the length of the huge annealing drums while being kept suspended by baffles. Proof planchets are annealed on a slowly moving belt and are then burnished in a vibrating vat of oblong steel pellets, hence their freedom from annealing chatter.

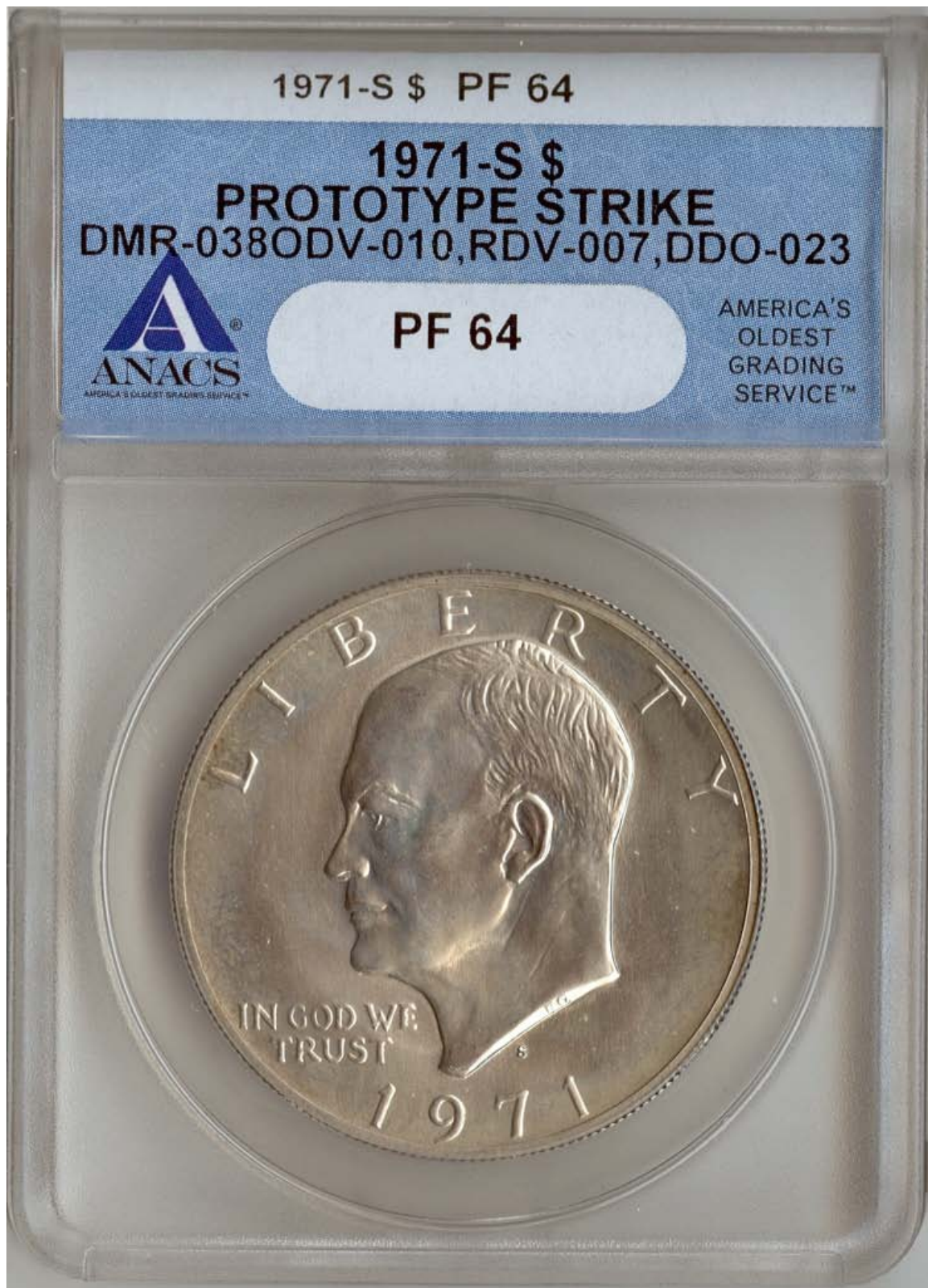


FIGURE 24 The Lydston Prototype Obverse as currently holdered.



FIGURE 25 The Lydston Prototype Reverse as currently holdered.

SECTION 2

THE CHATHAM 1971-S PROTOTYPE STRIKE IKE ODV-011, RDV 007



COPYRIGHT CHATHAM-RHE OCT 2010

FIGURE 26 This photo is of the edge of Ike's neck, field to your left. Strong side-lighting was used to bring out the regular pattern left by the burr cutter on the business end of the Janvier lathe. This pattern is present on some of the Obverse edges and more copiously on device edges on the reverse.

Introduction

The Chatham Prototype was found in a Blue Pack by Mr. Charles Chatham. Charles, who collects obverse doubled dies and who has about a dozen "Discovery" and "First Reported" DDO Cents and Franklins to his credit, had become progressively more frustrated with this Ike Dollar because he knew it was strange but could not pin down the strangeness. He wound up submitting it to ANACS with six other Ikes at the \$20 level for attribution.

John Roberts immediately recognized the reverse on one of the six Ikes was identical to Lee's attributed Prototype reverse and sent photos to the Ike Group for our Web Site. Lee spotted a likely new obverse

design and made that observation on our web site. I then contacted John Roberts who promptly sent the coin off to Dr. Wiles who concurred with that observation.

When all that had settled out, I contacted Mr. Chatham and asked if there was any way I could study and photograph his Ike. Charles graciously and generously brought the coin to Burlington, Vermont, and with his participation, I happily photographed it over three days.

What follows are some of the more telling photos, with brief commentary to present this remarkable Ike, remarkable because it carries its own unique evidence that it was minted early in the development of the Eisenhower Dollar and without the usual steps between master hub and struck coin that smooth out most of the residual roughness on the Master Hub caused by the cutting burr of the Janvier Lathe.

The residual roughness is an arresting feature. Present on most of the vertical surfaces on most of the obverse devices are small-scale saw-tooth-like “machining remnants”, as can be seen in Figure 26. In a few places this machining clearly crosses from one edge to the opposite edge of a device, and in several places it spills out onto the field adjacent to the device.

Having never noticed such coarse machining residue on any Ike before Mr. Chatham’s and not knowing what the heck I was looking at, I was eager to describe it to Bill Sanders, our tool and die expert. Without a pause, he calmly said it sounded like the un-polished roughing traces from the cutting burr of the Janvier Reduction Lathe. Of course! Why hadn’t I thought of that!

Now sensitized to this image, I’m seeing small areas where the machining survives on other Ikes including some proof Ikes, but on this Ike there was no attempt made to removing any of the master hub machining residua (except on the tops of the devices, more on this later). The obvious conclusion: **this coin was not intended to be a finished product (literally) and thus was likely a test, or “prototype” strike.**

So now we have two Ikes with the same unique reverse that’s consistent with an early trial design, married to two different obverses both of which are unique and also look like early trial designs. Both obverses have characteristics we now find on both proof and business strike Ikes. Both obverses could be pushed a bit to become more like our proof Ikes or more like our “low relief” (“TYPE 1”) obverse design, so it is not unreasonable that Gasparro was still looking for and testing designs that could be used for all Ikes when these two Prototypes were created. If Bill is right (and I’m betting he is), the chain of events for the Chatham Ike was:

- An obverse master hub was cut on the Janvier Lathe from a promising stage of the Galvano, to begin or continue early design explorations into a single design for all Ikes, silver proof, clad proof, silver specimen and circulation clad.
- That master hub, with no refinements to lettering or numbers other than some “shot treatment” polishing to the tops of the letter and number devices, was used to hub a die which was probably mounted immediately in a coin press to strike the Chatham Prototype (modifying the hubbed die would likely have removed some of the obverse machining).

Aside from its unique obverse design and the reverse design it shares with Lee’s Prototype, what’s wonderful about the Chatham Prototype is the rather direct insight it provides into the appearance of the up-line master hub! We’re looking back through time at a master hub that dates early in the design explorations of the Eisenhower Dollar.

Important Comment

Before we get to the photos, there has been discussion lately suggesting that the term “Prototype” should not have been used to describe Lee’s Ike, that the Philadelphia die shop was in such chaos that who knows *what* was minted early enough in the design sequence to warrant “Prototype”.

I disagree (is anyone surprised. . .) and here's why. The earliest designs were conveyed from Galvanos to hubs. With Mr. Chatham's Ike we have a remarkably direct look at one such obverse and with Lee's, another, so now we know indirectly of possibly two obverse Galvanos (or one Galvano that was modified significantly?) used to create two obverse master hubs, and, of course the strange Earth on the reverse of both prototypes that closely resembles the Earth found on the 1970 reverse Galvano. Here's the deal: from the early starting point we're looking at in the photos below, to the Ikes we collect, ***the Ike Series almost designed itself through empiric design changes and adjustments, largely a trial (literally) and error process.***

Through a chaotic but continuous process of hubbing and reverse hubbing, of "capturing" successful features (whether serendipitous or purposeful) by promotional hubbing of the virgin working dies set aside from each new group of working dies being tested, or through small scale testing with as few as one or two working dies, or through testing of more than a few dies in limited production or through large-scale full die-life production testing, the Ike Series largely "designed itself" as one design flaw after another was overcome. The over-all sequence of advances in the design sequences of the Series is well enough understood now that it seems almost a fool's argument to suggest the Chatham Ike and Lee's Ikes are not early test strikes, i.e. Prototypes. The Philadelphia die shop workers would have had neither the time nor the funding for "retrospective experimentation". The progress of the Ike design from initial Galvano to the Ikes we now collect was inexorably in the direction of progress forced by confronting and solving design and production problems. There were some hiccups along the way but clearly these Prototype Strikes with their crude cutting burr remnants were created early on.

Time will tell if this assessment is correct and I convey it here with no sense of certitude. Rather, it is the best understanding I can present at this time based on the tapestry of observations and deductions presented throughout this book and the failure of dozens (hundreds?) of Ike collectors looking through 71-S Silver Ikes to find other Prototype candidates.

The Chatham Prototype photographs

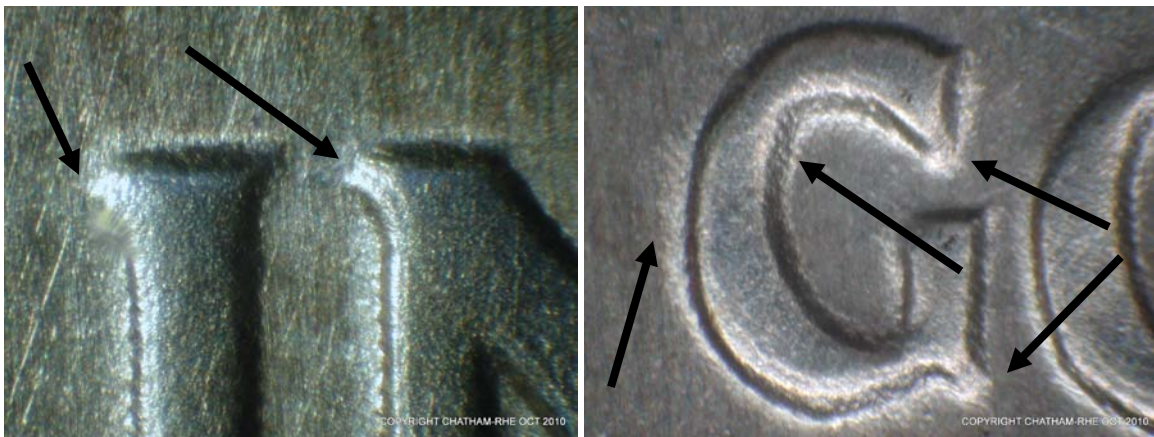


FIGURE 27: Nice doubling!

You can see the machining marks left by the Janvier's cutting burr, especially where they spill onto the field. To clean up the fields, fairly heavy lap abrading and polishing would be required, which would lower the relief of all the devices. (Chapter30 ("71-S SP "PPL") may help put this reality in perspective for you.) Is it possible that there is evidence on this obverse that in anticipation, the devices had enough relief to provide for lap polishing of the fields?

Well, take a look at FIGURE 28. The bust's "FG" is riding somewhat higher above the plane of the field than we're used to seeing, a solid indication that the Galvano's design and this "reduction" (technically a master hub) we're looking at through the Chatham Prototype anticipated the need for higher relief to accommodate the amount of abrading and polishing required to clean up the Janvier burr's machining marks on the fields next to some devices.

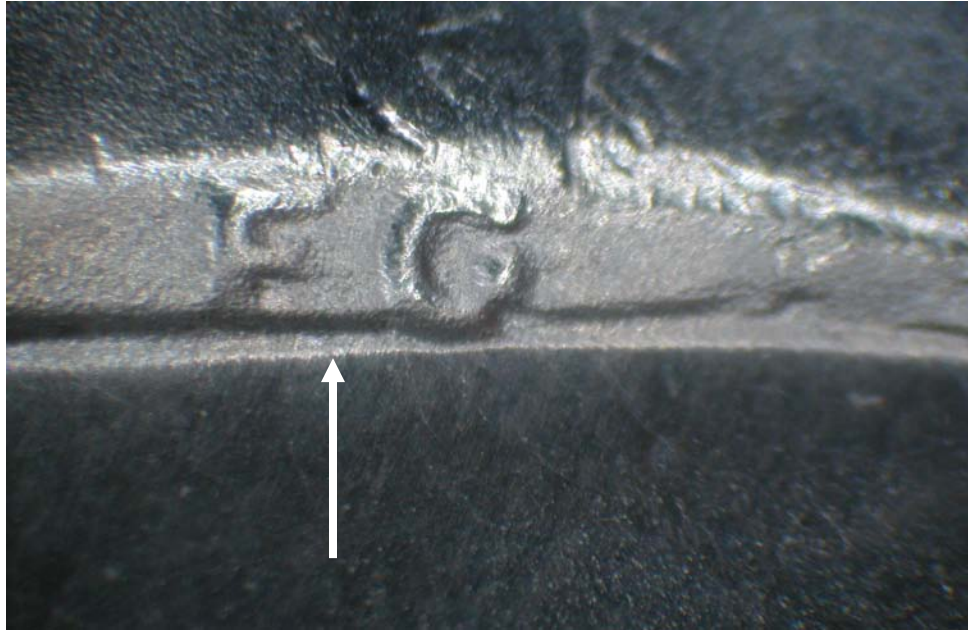


FIGURE 28 Designer's initials are located well above the field.

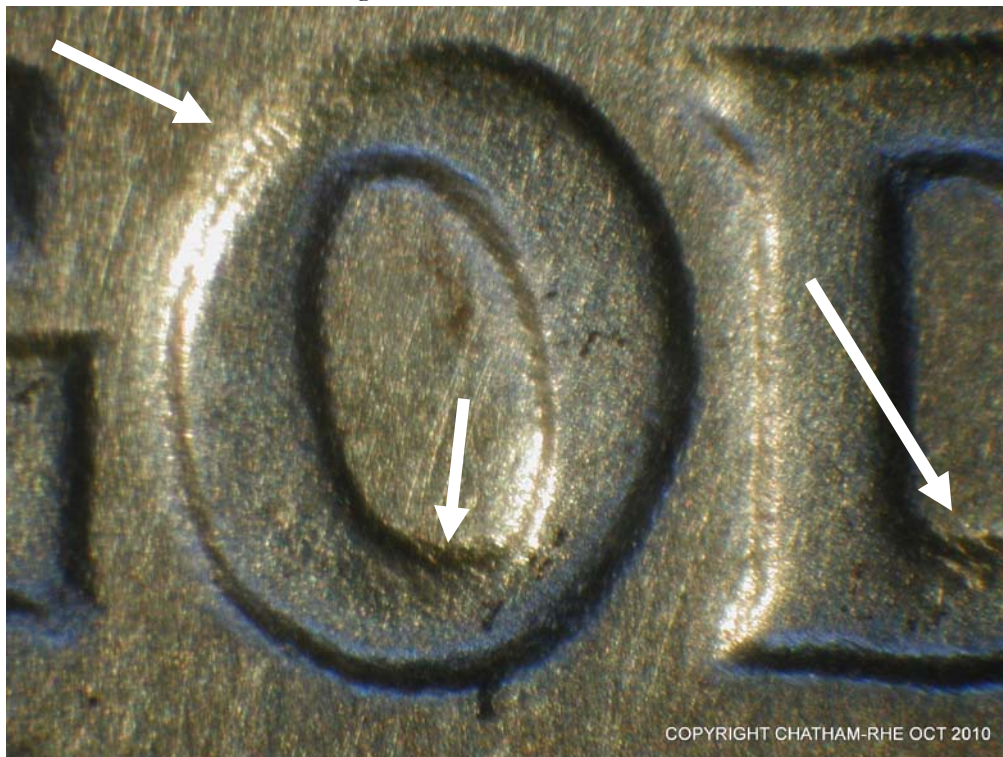


FIGURE 29 Note the saw-tooth burr machining on both letters.

Many of the photos show copious fine abrasions on all fields: it's likely the Lydston and Chatham Prototypes were struck on proof planchets (to avoid annealing chatter and other business-strike planchet defects) so the fine abrading was used to give these prototypes an appearance that could be either proof or business strike, consistent with exploring a single design that could be used for both. The Lydston Prototype has very similar fine field abrading.

The Lydston prototype obverse has a more refined finish: most of the Janvier machining remnants have been polished off and the bust's FG is at "normal" relief. But check out the "I" of "IN" on Lee's Prototype and you'll see a significant trace of the Janvier Lathe master hub machining residue.

I don't read much into this observation: specifically, I can't see how it would answer the interesting question, "Which Prototype came first?" While it might be fun to speculate on the answer, I'd rather pursue the reasoning that both were early design explorations and likely created in the same time frame.

In my humble opinion, the two Prototypes are equally compelling, equally interesting and equally valuable for the glimpse they both provide back through time into the early days of the design of the Eisenhower Dollar.



FIGURE 30 Fine abrading on the obverse of the Chatham prototype.



FIGURE 31: The eye and ear are slightly different than either common proof or business strike obverse. Comparison of the Lydston and Chatham prototypes is still ongoing in these specific areas. Some of the eye details are actually close to field level and the Chatham Prototype's eye could look a bit different with its greater elevation above the field.



FIGURE 32: The hair has features identical to some found on proof Ikes, and identical to some details found on business strike Ikes.



FIGURE 33 “R” is unique. Serifs on the Lydston prototype are minimal, but are quite generous on the Chatham prototype. Note the concave-like curved foot and the Class II doubling on the lower loop of the “R”. The generous foot to head separation gives this R an appearance almost similar to the 1973 and later serif R’s.



FIGURE 34 1970 obverse galvano for comparison of hair and “R”.

Chatham Prototype reverse photographs



FIGURE 35 Cleaning up these stars on the master hub where they meet the field could shrink some of the arms significantly, which is exactly what we see on coined Ikes: slightly smaller stars.



FIGURE 36 The reverse devices on both prototypes seem to have received some smoothing, but not enough to remove all the remnants of the machining of the master hub. Does this (and the irregularity at the bottom of the "S") not suggest the reverse on both prototypes was also in the early stages of its design's development?



FIGURE 37 "AM" from AMERICA.

The "R" is from DOLLAR.



FIGURE 38 This Earth from the Chatham prototype is identical to the Earth on the Lydston prototype (allowing for slight differences in lighting between my two photographs).

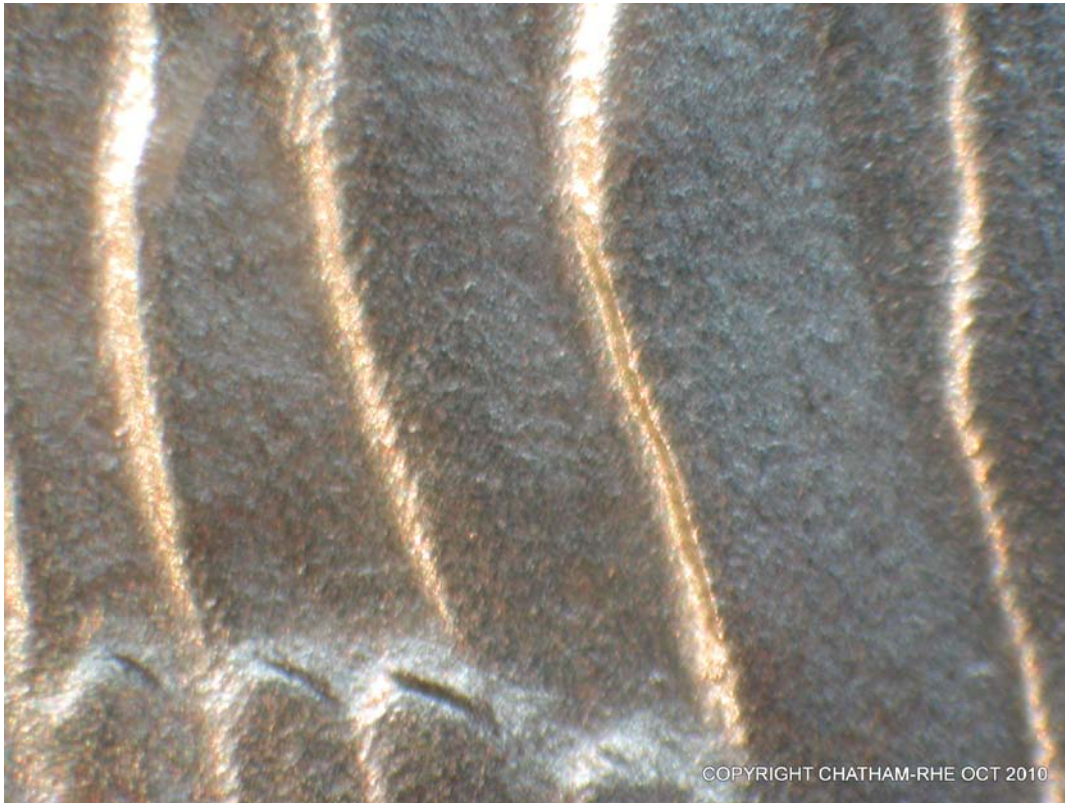


FIGURE 39 Residual Janvier lathe cutting-burr marks on the Eagle's wing.



FIGURE 40 "FG" and Flag Pole on reverse and more Burr remnants



FIGURE 41: This is one devil of a reverse-image teaser (the “G” of the “FG” on the bust truncation); may appear to be a sunken “G” , even though the “G” is most definitely in relief, riding high off the field and badly in need of further smoothing..

Earlier mention was made of the treatment to the high-relief surfaces of the devices on the obverse of the Chatham obverse. This finishing technique is called “**Shot Finishing**” and you can find traces on both reverses with a stronger showing on the Chatham obverse. Shot Finishing is carried out by a kind of sand-blasting using small steel shot (much smaller than bee-bees) instead of sand.

The “S” in Figure 36 provides the clearest picture of this finishing technique: think of the copper bowls and flats you’ve seen that were created with a ball-peen hammer or similar instrument. Possibly a more concentrated treatment with shot finishing is responsible for the busy texture that covers the “G” and its immediate neighborhood in the above photo. Remember shot marks on a die will be in relief on the coin.

I should have mentioned early on that by definition these two Prototypes are in VEDS! Bill commented that most machining residue on early die state dies would tend to smooth out by MDS. That’s one reason most of us never noticed this feature until this chapter (well, did you? None of us had, even though now it seems obvious on a significant percentage of proof and business strike Ikes in earlier die states).

Finally, as mentioned earlier, research on the two Prototypes is a work in progress. I took several hundred photos of the Chatham Prototype over the three days I had access to it, but I bet I left out details we will need to answer questions that are sure to be asked in the near future. Fortunately, Mr. Chatham tells me he is willing to bring his Ike back for more study and photographs upon request.

Lee Lydston's account of his contribution to the Chatham Prototype Story

"When the second 1971-S Prototype Eisenhower dollar was announced on the IKE Group Forums, I was very excited to view and hear about the coin. The announcement stated that the RDV-007 Reverse had been found mated to a common Obverse. I found this a bit curious; it didn't look "Common" to me."

"Having learned over the years to look for the unexpected, I examined the R very carefully on the photo supplied on the forums. While the obverse of the coin seemed closest to the "proof" obverse, as indicated by the hair design, the R was not a peg leg, was not the R what appears on my coin, nor was it the ODV-004 R, which has what appears to be an added serif, and it certainly was not an ODV-001 Serifed R as what appears on the Business Strike Obverses. As far as I could see, the R was different than any I'd seen in the past in either Business Strike or Proof Strike."

"After reading that the coin was to be graded and slabbed as an ODV-004/RDV-007 coin, I decided to share my thoughts and encourage John Roberts, who had spotted this Ike in a small group that had been submitted to ANACS by Mr. Chatham, to submit it to James Wiles for accurate attribution. James has an accurate and accepted definition for the various Eisenhower Obverse and Reverse designs and the difference in the R absolutely Required that he see the coin. I generated comparison photo's and posted them to the Ike Group's Forum which convinced Rob Ezerman to contact John Roberts who then forwarded the coin to James."

"Opportunities abound with the Eisenhower Dollar and I just could not see this one getting passed up."

Rob Ezerman's comments on the Chatham prototype

In several chapters in this book I have invited first-hand comments and accounts to give us all a feel for the discovery process, how the most remarkable discoveries often come along unexpectedly in ordinary circumstances:

- Herb Hicks noticing a subset of 1972(P) Ikes that had arrived at his Boston Bank in March 1972, Ikes whose reverses just looked (and felt) *different*
- Brian Vaile looking at almost every Denver Ike in Florida coin shops for Repunched Mint Marks when he heard one had been discovered, *and finding them*.
- Lee Lydston, at a busy coin show, finding one Ike in a tube of mixed Ikes that looked good but also "*different*".

- Charles Chatham feeling unsettled that he could not figure out why a Blue Ike he had purchased in its original packaging *just didn't look right*.
- Even my modest discovery of only the second 71-D DDR from a storage tube.

Nothing especially improbable or terribly difficult about any of these discoveries! They all flowed from Ike collectors who were determined to keep their eyes and minds open to new possibilities. In each case they may not have known what they were seeing, but at a gut level they recognized something wasn't "right". That was the key.

The 95% of our brains that we're not using consciously isn't completely out to lunch, you just have to find ways to let it work for you, starting with a somewhat disciplined study of the common Ikes until you can almost draw some of their important features from memory, perhaps the features you are most "drawn" to (sorry).

I know from personal experience that it's easy to let one's imagination run away, but that excess is quickly roped in as you seek feedback from coin friends. Certainly the Ike Group members are always available for questions and to evaluate possible new discoveries.

I believe it's healthier and more productive in the long run to err on the side of an over-active imagination and rein that in over time through experience, than it is to start and remain locked in to seeing only what you expect to see, what you want to see, what you've seen before. Nothing wrong with that approach, it fuels our collecting instincts and passions, but the Eisenhower Series is so new there is much to be discovered, much yet to be "seen" if we can all just open our minds.

I'm sure you noticed that Section I of this chapter is more organized than Section II, that's because the Chatham Prototype is so new to us.

It would be helpful to have photographic comparisons of key features of all five early Ike designs and the "rushed" low relief Designs used for 1971 circulation and Silver Specimen Ikes:

- The 1970 Galvanos
- The Lydston Prototype
- The Chatham Prototype
- The 71-S Ike production Proof
- The 71-D FEV (RDV-006)
- The 71-S Ike Silver Specimen ("Blue Ike")

Arranging comparison photo in print form would be a daunting task but it sure would be helpful.



FIGURE 42 The Chatham 1971-S Prototype Obverse as currently holdered.



FIGURE 43: The 1971-S Chatham Prototype Obverse. Photograph courtesy of John Roberts (he had it raw, lucky guy). \$ five figure Ike (very possibly); would you have picked it out?



FIGURE 44 The 1971-S Chatham Prototype Reverse. Photograph courtesy of John Roberts



FIGURE 45 Chatham Prototype R, courtesy of John Roberts.



FIGURE 46 Chatham Prototype Motto, courtesy of John Roberts.



FIGURE 47 Chatham Prototype hair, courtesy of John Roberts



FIGURE 48 Chatham Prototype Eagle's head and right wing, courtesy of John Roberts

NOTES